



DEA No. RA0571996  
FL License # CMTL-0003  
CLIA No. 10D1094068

# Certificate of Analysis

R&D

**EXHALE  
WELLNESS**

6048 TRIANGLE DRIVE  
COMMERCE, CA 90040

Batch # 116D8LR-SG  
Batch Date: 2023-01-16  
Extracted From: Hemp

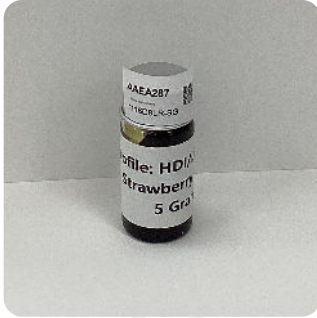
Test Reg State: Florida

Statement of Amendment: Updated Description

Order # EXH230124-120001  
Order Date: 2023-01-24  
Sample # AAEA287

Sampling Date: 2023-01-28  
Lab Batch Date: 2023-01-28  
Orig. Completion Date: 2023-02-01

Initial Gross Weight: 18.557 g



Product Image

Potency  
Tested

Delta 8/Delta 10 Potency 13 -  
(LCUV)

Specimen Weight: 56.800 mg

Analyte	LOD (%)	LOQ (%)	Result (mg/g)	(%)
Delta-8 THC	2.60E-5	0.0015	738.530	73.853
CBD	5.40E-5	0.0015	50.320	5.032
CBG	2.48E-4	0.0015	2.950	0.295
CBC	1.80E-5	0.0015	<LOQ	<LOQ
CBDA	1.00E-5	0.0015	<LOQ	<LOQ
CBDV	6.50E-5	0.0015	<LOQ	<LOQ
CBGA	8.00E-5	0.0015	<LOQ	<LOQ
CBN	1.40E-5	0.0015	<LOQ	<LOQ
Delta-10 THC	3.00E-6	0.0015	<LOQ	<LOQ
Delta-9 THC	1.30E-5	0.1	<LOQ	<LOQ
Delta6a10a-THC	8.47E-5	0.0015	<LOQ	<LOQ
THCA-A	3.20E-5	0.0015	<LOQ	<LOQ
THCV	7.00E-6	0.0015	<LOQ	<LOQ
Total Active CBD			<LOQ	5.032
Total Active THC			<LOQ	<LOQ

Tested

SOP13.052 (LCUV)

Potency Summary

<b>Total Delta 8</b> 73.853% <LOQ	<b>Total Delta 10</b> None Detected
<b>Total Active THC</b> None Detected	<b>Total Active CBD</b> 5.032% <LOQ
<b>Total CBG</b> 0.295% <LOQ	<b>Total CBN</b> None Detected
<b>Other Cannabinoids</b> None Detected	<b>Total Cannabinoids</b> 79.180% <LOQ

Aixia Sun Lab Director/Principal Scientist  
D.H.Sc., M.Sc., B.Sc., MT (AAB)



Definitions and Abbreviations used in this report: Total Active CBD = CBD + (CBD-A \* 0.877), \*Total CBDV = CBDV + (CBDVA \* 0.87), Total Active THC = THCA-A \* 0.877 + Delta 9 THC, Total THCV = THCV + (THCVA \* 0.87), CBG Total = (CBGA \* 0.877) + CBG, CBN Total = (CBNA \* 0.877) + CBN, Total CBC = CBC + (CBCA \* 0.877), Total THC-O-Acetate = Delta 8 THC-O-Acetate + Delta 9 THC-O-Acetate, Other Cannabinoids Total = Total Cannabinoids - All the listed cannabinoids on the summary section, Total Detected Cannabinoids = Delta6a10a-THC + Delta8-THC + Total CBN + CBT + Delta8-THCV + Total CBG + Total CBD + Total THCV + CBL + Total THC + Total CBC + Total CBDV + Delta10-THC + Total THC-O-Acetate. (mg/ml) = Milligrams per Milliliter, LOQ = Limit of Quantitation, LOD = Limit of Detection, Dilution = Dilution Factor (ppb) = Parts per Billion, (%) = Percent, (cfu/g) = Colony Forming Unit per Gram (cfu/g) = Colony Forming Unit per Gram, LOD = Limit of Detection, (µg/g) = Microgram per Gram (ppm) = Parts per Million, (ppm) = (µg/g), (aw) = aw (area ratio) = Area Ratio, (mg/Kg) = Milligram per Kilogram, \*Measurement of Uncertainty = +/- 10%

This report shall not be reproduced, without written approval, from ACS Laboratory. The results of this report relate only to the material or product analyzed. Test results are confidential unless explicitly waived otherwise. ACS Laboratory is accredited to the ISO/IEC 17025:2017 Standard.